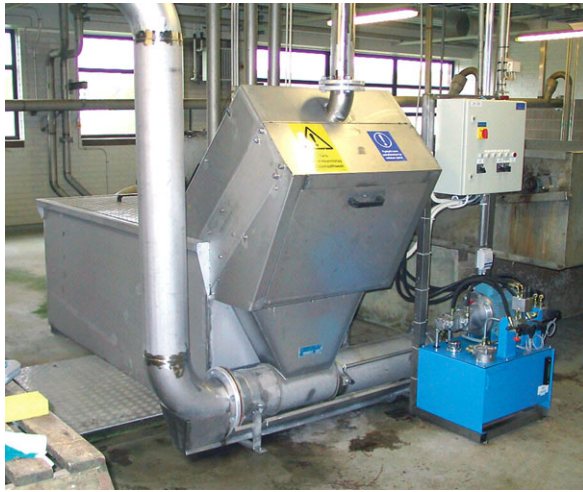


Hydraulic Step Screen

■ In-channel Screen



II.I MACHINE DESCRIPTION

The hydraulically operated, fine step screen separates and collects efficiently solids from wastewater. Thanks to the hydraulics there is more than enough power for even the largest screening unit. The use of hydraulics also gives an advantage of locating the electric motor that is sensitive to corrosion out from the wastewater channel.

The screen can also be integrated with the hydraulic screening press, using the same hydraulic unit. The step screen has a low structure, which assists installation and maintenance, and connection to existing continuation processes. It is now easier to build a screening line in closed surroundings to cut down nuisance from odour and splashing.

The step screen's high screening ability is based on the screen mat sieving effect.

The screen mat is not removed at one go, but is used as the screening surface as long as possible.

The screened materials are raised one step at a time to the top of the bars, then discharged to a press or onto a conveyor. The hook-like shape of the steps effectively prevents the screened material from dropping backwards and the shape of the underside of the bars stops solid matter from collecting under the bars, which minimizes maintenance in the channel.

The screen has no rotating movement that would force screened material between the bars. The screen has built-in protection: an automatic torque limiter stops the machine in a overload situation. Bar spacing is 1 - 10 mm. The step screen is manufactured in stainless acid-resisting steel (AISI 304, AISI 316).

NEW DESIGN - is the electric drive for small and medium size fine screens!!

	Max height water (mm)	Bar clearance	Screening width	Capacity (m ³ /h)	Discharge height	Overall height
PMT 10S	600	2 - 6	300 - 700	180 - 1000	725	1725
PMT 17S	600	3 - 6	300 - 700	250 - 1000	975	1950
PMT 20S	680	3 - 6	300 - 700	300 - 1200	1180	2150
PMT 23S	900	3 - 6	300 - 700	450 - 1500	1400	2350
PMT 30S	1200	3 - 6	300 - 700	650 - 1900	1900	2950
PMT 35S	1550	3 - 6	300 - 700	850 - 2500	2250	3275
PMT 43S	2100	3 - 6	300 - 700	1100 - 3000	2800	3850



II.II AUXILIARY EQUIPMENT

Besides different screening solutions, R.E.M. manufactures screening conveyors and hydraulic screening presses which can be integrated to the same hydraulic unit than the screen.